



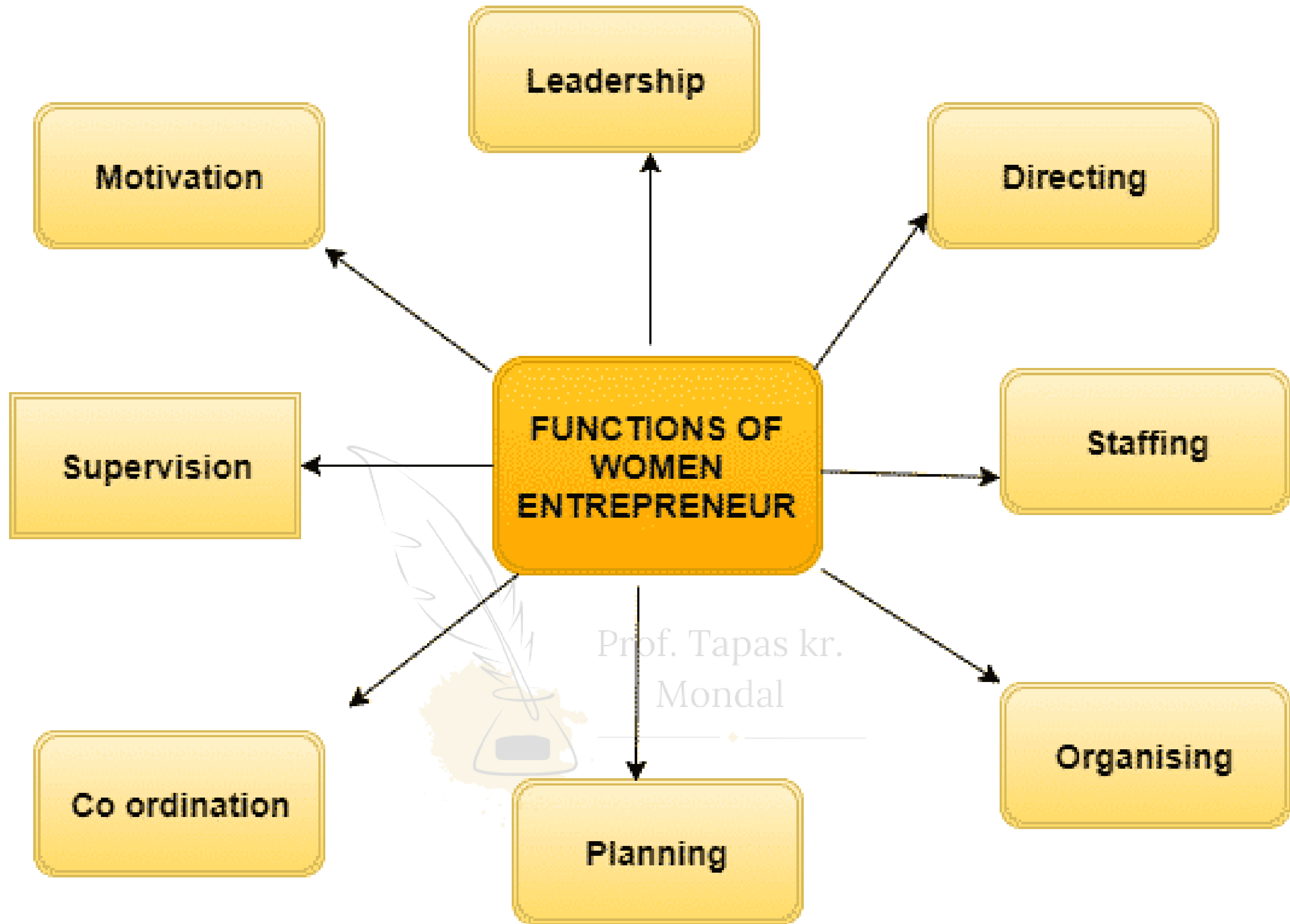
Women Entrepreneurship

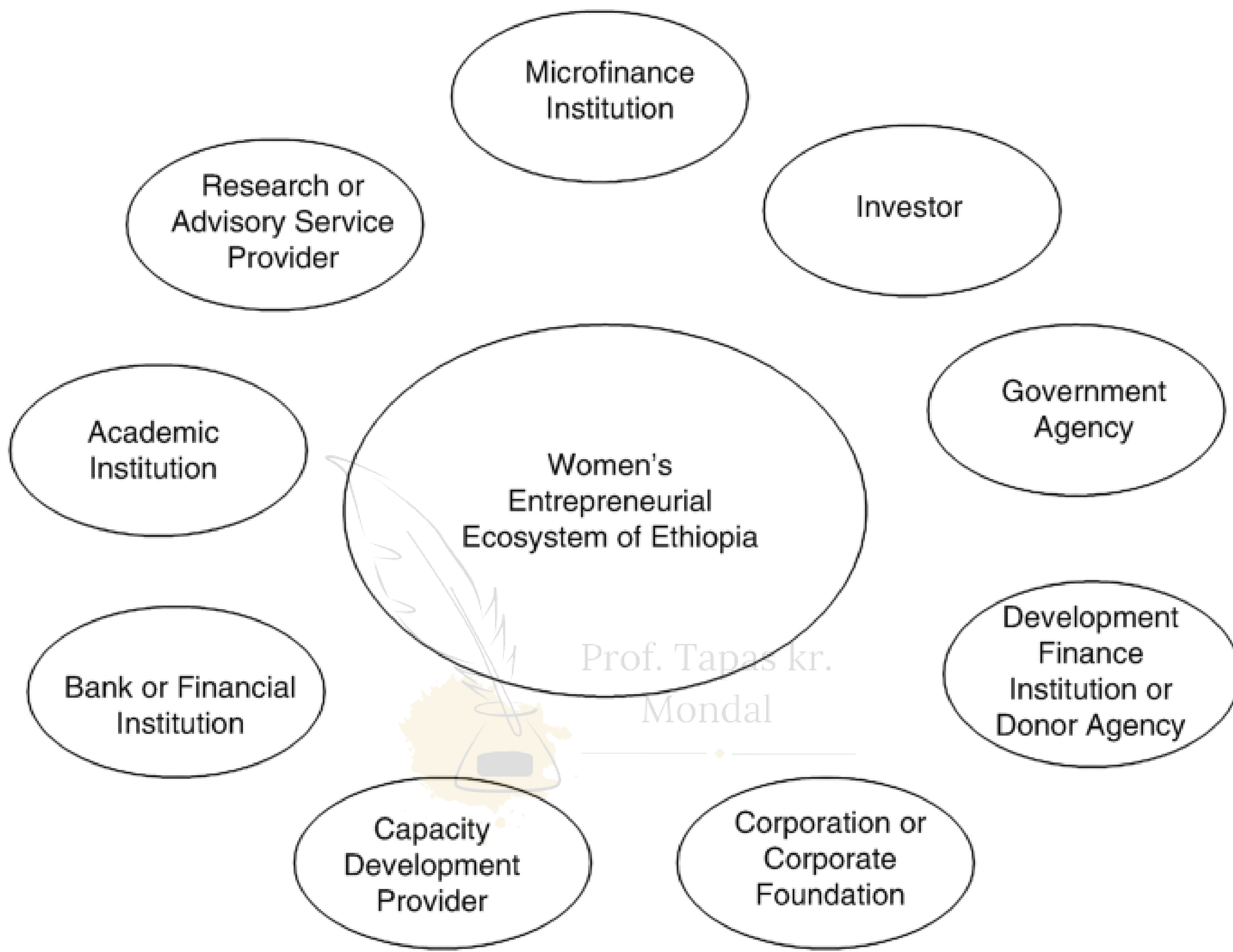
Presented by: Prof. Tapas Kr. Mondal



Prof. Tapas kr.
Mondal







WOMEN ENTREPRENEURS

How to Build an Ecosystem to Support Women Entrepreneurs?



WOMEN ENTREPRENEURS

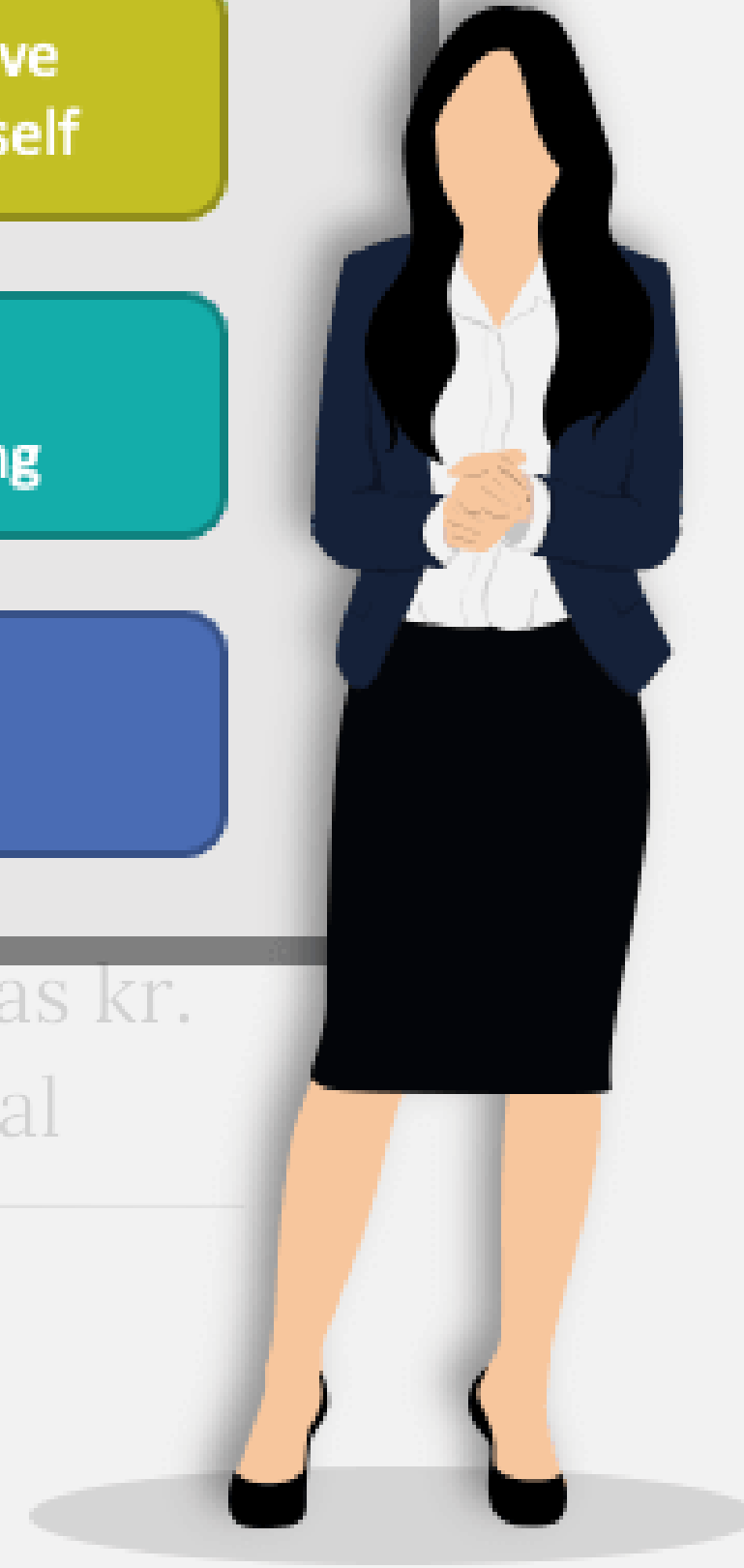
Challenges of Women Entrepreneurs



WOMEN ENTREPRENEURS

5 Crucial Things Women Entrepreneurs should Remember

-  Have a Vision
-  Believe Yourself
-  Be Consistent
-  Stay Strong
-  Don't Distract from Society

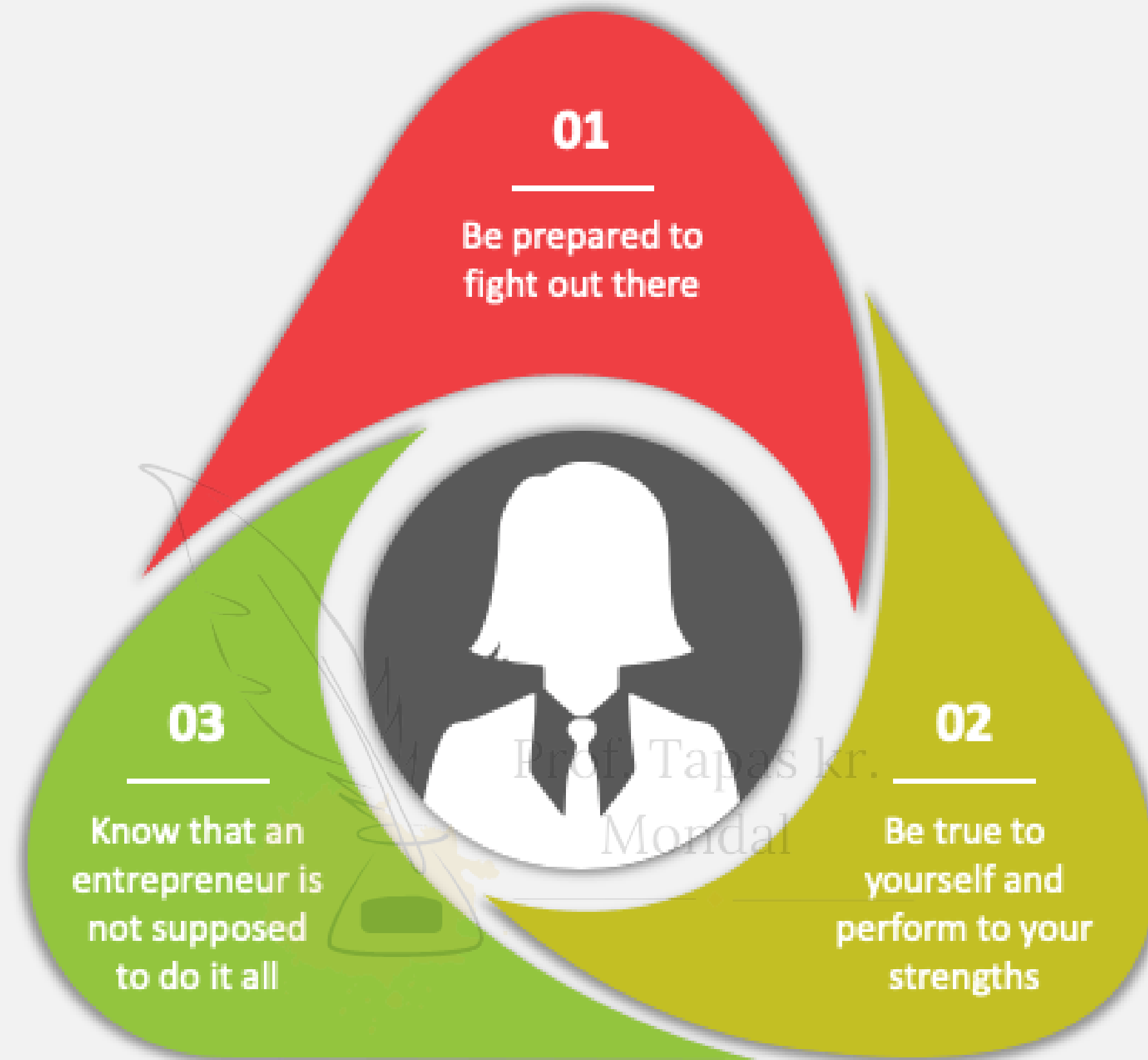


Prof. Tapas kr.
Mondal



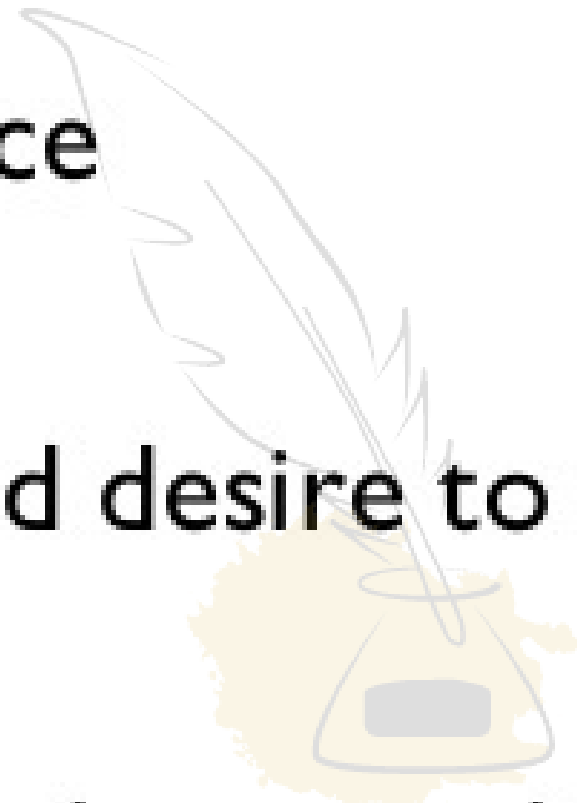
WOMEN ENTREPRENEURS

Lessons from Women Entrepreneurs



CHARACTERISTICS OF WOMEN ENTREPRENEURS

- Imaginative
- Attribute to work hard
- Persistence
- Ability and desire to take risk
- Profit earning capacity



Dr. Tanya Kr.
Mondal





Udyogini Scheme for Women Entrepreneurs



UDYOGINI

Interest Free Loan Scheme



Prof. Tapas kr. Mondal

Of the 7 entrepreneurs in India, only **1 is woman***

*Sixth Economic Census



44,033

Women Entrepreneurs



24,960

Youth In Skilling



220,352

Lives Touched



50%

Annual Income

Udyogini's Impact

WOMEN ENTREPRENEURS

Opportunities for Women Entrepreneurs





Global Trainer Networks

Make it possible to have a train at scale, have a global reach and learn from regional exchanges.



Rigorous Certification Processes

Trainers are certified by ILO to ensure quality of materials and delivery.



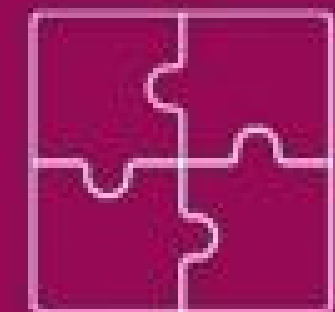
Local Partnerships

Contribute to local ownership and more sustainable, context-specific trainings.



Post-Training Support

Helps entrepreneurs and trainers apply what they have learned and leads to greater impact.



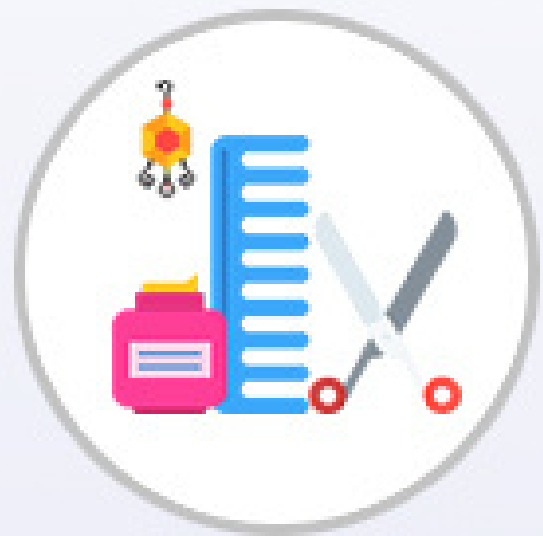
Modular Approach

Allows for integration into bundled services and holistic programming.

Some loans offered by
Bharatiya Mahila Bank:



BMB SHRINGAAR



A loan for beauty parlors, spas or salons

BMB ANNAPURNA



A loan for food catering business

BMB PARVARISH



A loan for day-care centers

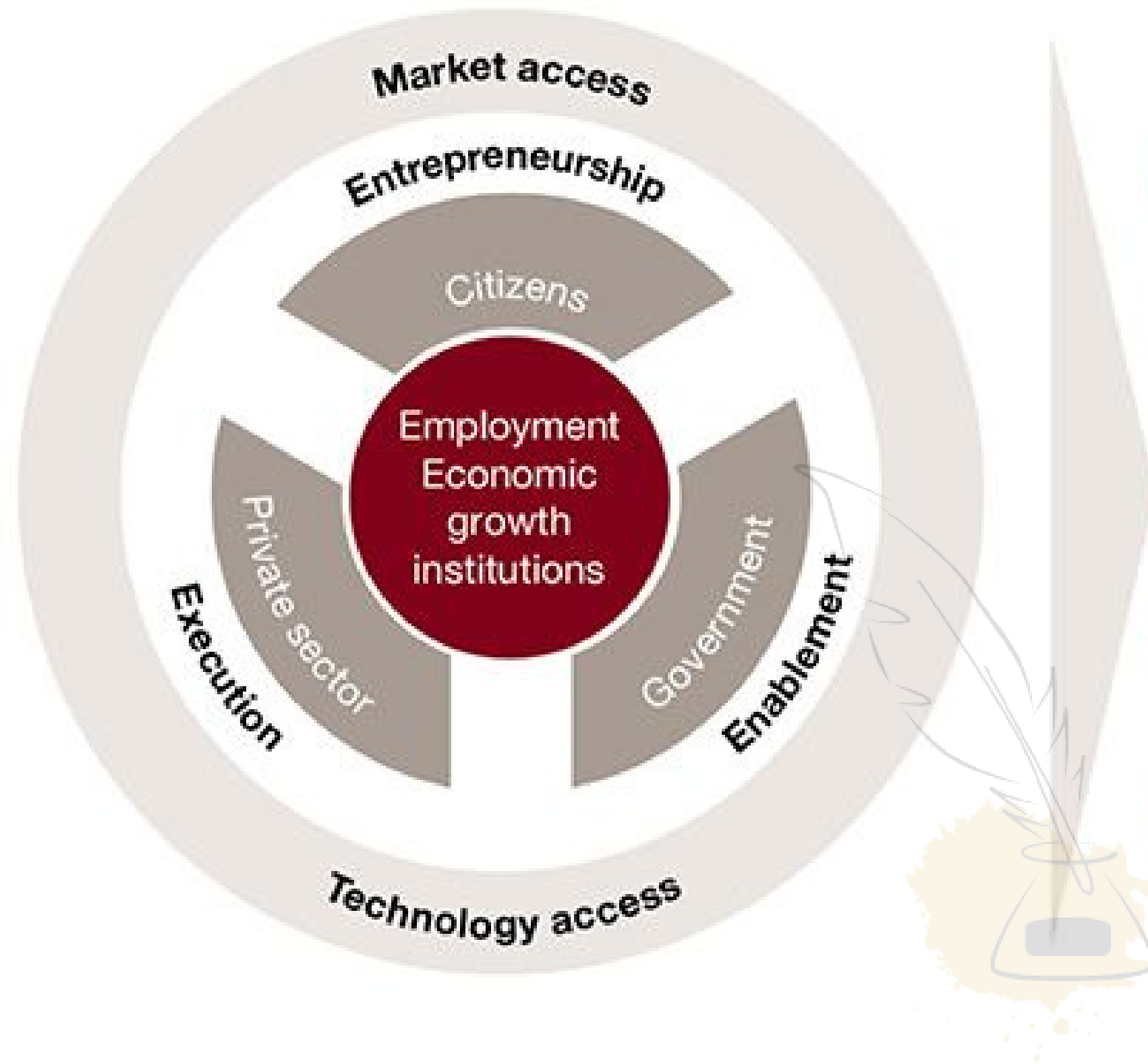
BMB KITCHEN MODERNISATION LOAN



A loan for maintaining and upgrading your kitchen

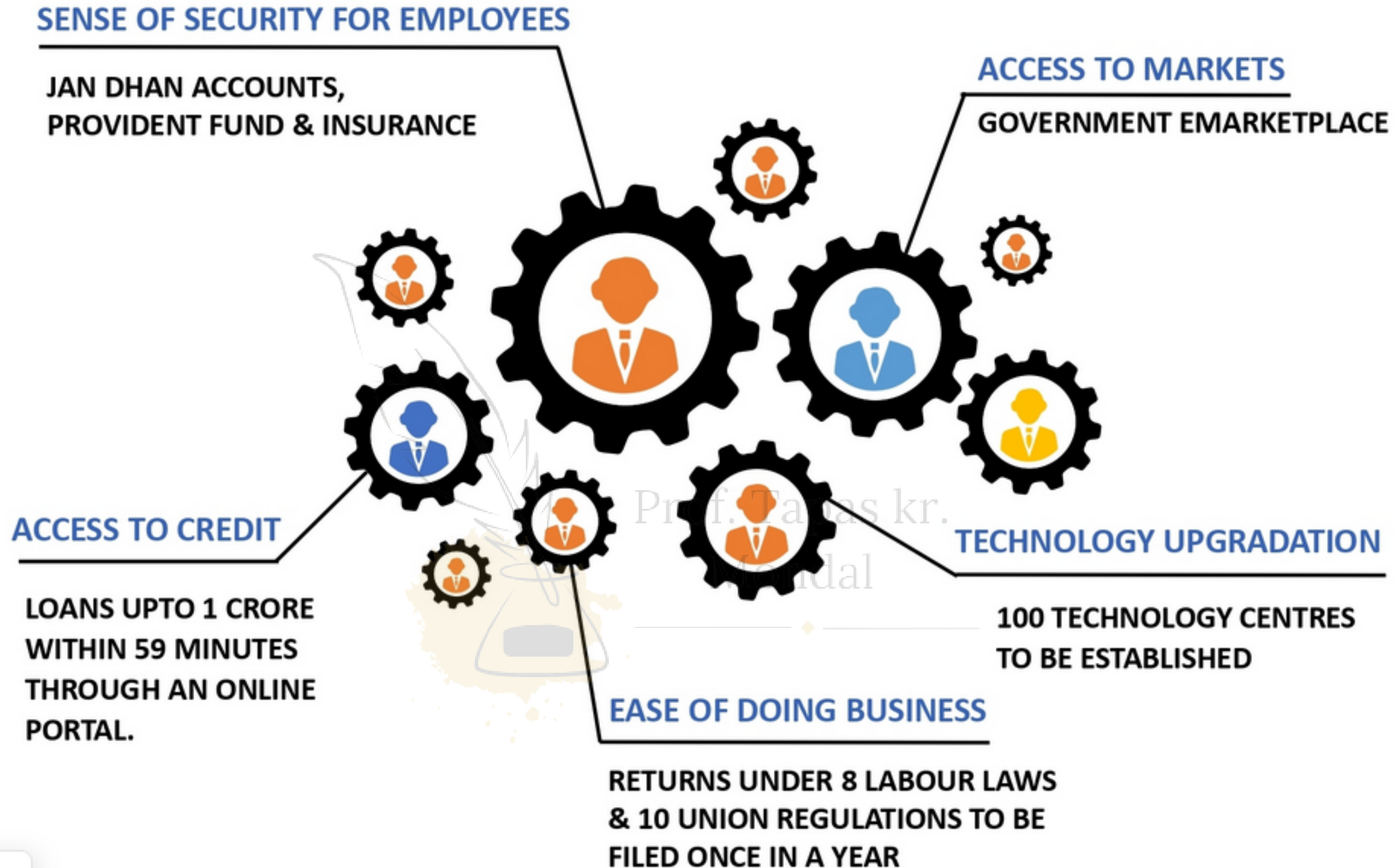
Prof. Tapas K.
Mondal

The 'Nagarik' methodology has five key principles that guide the approach to employment creation.



- 1** Focusing on all the components of sustainable job creation while keeping the 'Nagarik' approach at the core
- 2** Making market connect the focal point for driving citizen and business economic activity
- 3** Leveraging the state's core capabilities for identifying solutions
- 4** Integrating the capabilities of citizens, the private sector and government for execution
- 5** Developing long-term capabilities for sustainable impact

5 GOVERNMENT INITIATIVES FOR MSME



Thank You



Prof. Tapas kr.
Mondal

